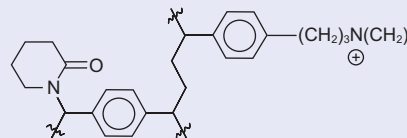


## VertiPak™ HCP-SA

- VertiPak™ HCP-SA SPE is Polyamide-Divinylbenzene Copolymer-Trimethylaminopropyl (PA-DVBT), mixed-mode polymeric sorbent offering both strong reversed phase interaction and strong anion-exchange interaction with interference-free extraction, compatibility with LC-MS or GC-MS
- Exhibits very high binding capacity over mixed-mode silica-C8/SAX sorbent, up to 30% of sorbent weight allowing larger sample loads or a smaller sorbent bed resulting in high, reproducible recoveries and less solvent usage
- Exhibits excellent mass transfer and mechanical strength for acidic polar compounds in an aqueous sample or a biological fluid sample
- Typical applications include acidic drugs and metabolites from biological fluids, environmental pollutants from water, drugs of abuse and metabolites from urine e.g. salicylic acid, ibuprofen, acetaminophen, 11-nor-delta-9-tetrahydrocannabinol-9-carboxylic acid
- Tube format is available in 4 tube sizes
- Tubes are packaged in zip sealing bag protective from moisture and light
- Includes Certificate of Analysis



### Chemical structure



VertiPak™ HCP-SA (Polyamide-divinylbenzene Copolymer-Trimethylaminopropyl, PA-DVBT)

### Specifications

Base	HCP-SA (Polyamide-Divinylbenzene Copolymer-Trimethylaminopropyl, PA-DVBT)
Particle Size (μm)	30-50
Pore Size (Å)	80-90
Surface Area (m <sup>2</sup> /g)	700-800
Carbon Load (%)	-
Endcap	No
pH Stability	1-14

### Ordering Information

Bed Weight	Tube Size	QTY	Part No.
<b>VertiPak™ HCP-SA SPE Tubes</b>			
30mg	1mL	100	0144-0136
30mg	3mL	50	0144-0145
60mg	1mL	100	0144-1536
60mg	3mL	50	0144-1545
60mg	10mL	30	0144-1564
100mg	1mL	100	0144-0336
100mg	3mL	50	0144-0345
100mg	10mL	30	0144-0364
200mg	3mL	50	0144-0445
200mg	6mL	30	0144-0454
200mg	10mL	30	0144-0464
500mg	3mL	50	0144-0645
500mg	6mL	30	0144-0654
500mg	10mL	30	0144-0664