

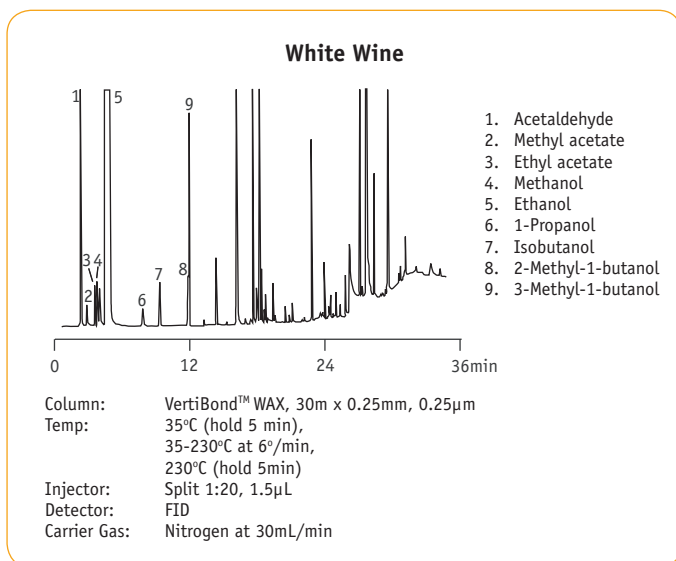
VertiBond™ WAX Capillary Columns

- 100% Polyethylene Glycol (PEG)
- High polar stationary phase
- High temperature range
- High efficiency, high inertness columns

VertiBond™ WAX column contains 100% Polyethylene Glycol (PEG) stationary phase. This high polar phase offers a wide range of working temperatures (270°C) and ideals for alcohols, aldehydes, ketones, and aromatic isomers.

VertiBond™ WAX Specifications	
Phase:	100% Polyethylene Glycol
Polarity:	High Polar
USP Designation:	G14, G15, G16, G39
Ideal for:	FAMEs, Polar Solvents, BTEX, Flavor and Fragrances, Glycols, Alcohols, and Aromatics

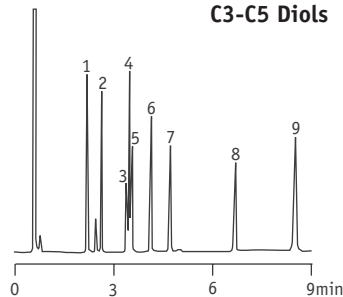
VertiBond™ WAX Specifications	
Restek	Rtx-WAX, Stabilwax
Agilent	HP-20M, HP-WAX, HP-INNOWax, HP Basic-WAX, DB-WAX, CAM
Supelco	Supelcowax 10, Omega-Wax
Alltech	AT-WAX
SGE	BP-20
Varian	CP-WAX52CB, CP-WAX57CB
Ohio Valley	Carbowax 20M
Phenomenex	ZB-WAX



Ordering Information				
Length (m)	I.D. (mm)	Film (µm)	Temp. (°C)	Part No.
10	0.25	0.20	250/260	0415-2040
		0.25	250/260	0415-2050
		1.20	250/260	0415-5120
15	0.25	0.10	250/260	0415-2001
		0.15	250/260	0415-2021
		0.20	250/260	0415-2041
		0.25	250/260	0415-2051
		0.50	250/260	0415-2091
		1.00	250/260	0415-2111
	0.32	0.10	250/260	0415-3001
		0.15	250/260	0415-3021
		0.25	250/260	0415-3051
		0.30	250/260	0415-3061
		0.50	240/250	0415-3091
		1.00	240/250	0415-3111
0.53	0.25	250/260	0415-5051	
	0.50	250/260	0415-5091	
	1.00	250/260	0415-5111	
	1.20	250/260	0415-5121	
	1.50	250/260	0415-5151	
	2.50	240/250	0415-5221	
25	0.25	0.20	250/260	0415-2042
		0.30	250/260	0415-3062
		0.50	250/260	0415-5092
		1.20	250/260	0415-5122
30	0.25	0.10	250/260	0415-2003
		0.15	250/260	0415-2023
		0.20	250/260	0415-2043

Ordering Information					
Length (m)	I.D. (mm)	Film (µm)	Temp. (°C)	Part No.	
30	0.25	0.25	250/260	0415-2053	
		0.50	250/260	0415-2093	
		1.00	250/260	0415-2113	
	0.32	0.10	250/260	0415-3003	
			0.15	250/260	0415-3023
			0.25	250/260	0415-3053
		0.50	0.30	250/260	0415-3063
			0.50	240/250	0415-3093
			1.00	240/250	0415-3113
	0.53	0.25	250/260	0415-5053	
			0.50	250/260	0415-5093
			1.00	250/260	0415-5113
		0.30	250/260	0415-5123	
			1.50	250/260	0415-5153
			2.00	240/250	0415-5233
2.50		240/250	0415-5223		
		5.00	240/250	0415-5213	
		50	0.25	0.20	250/260
0.32	250/260			0415-3064	
0.53	1.20		250/260	0415-5124	
60	0.25	0.10	250/260	0415-2005	
		0.15	250/260	0415-2025	
		0.20	250/260	0415-2045	
	0.25	0.25	250/260	0415-2055	
		0.50	250/260	0415-2095	
		1.00	250/260	0415-2115	
	0.32	0.10	250/260	0415-3005	
			0.15	250/260	0415-3025
			0.25	250/260	0415-3055
		0.30	0.30	250/260	0415-3065
			0.50	240/250	0415-3095
			1.00	240/250	0415-3115
	0.53	0.25	250/260	0415-5055	
			0.50	250/260	0415-5095
			1.00	250/260	0415-5115
1.20		250/260	0415-5125		
		1.50	250/260	0415-5155	

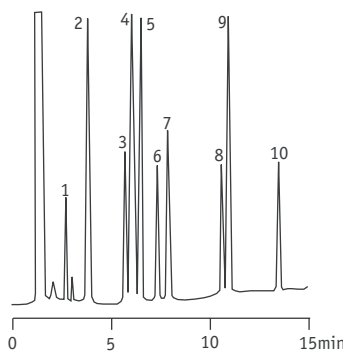
C3-C5 Diols



1. 2,3-Butanediol
2. 1,2-Propanediol
3. Unknown
4. 1,2-Butanediol
5. 2,4-Pentanediol
6. 1,3-Butanediol
7. 1,3-Propanediol
8. 1,4-Butanediol
9. 1,5-Pentanediol

Column: VertiBond™ WAX, 15m x 0.25 mm, 0.25µm
 Temp: 110°C, 110°C-170°C at 8°C/min
 Injector: Split
 Detector: FID
 Carrier Gas: Hydrogen

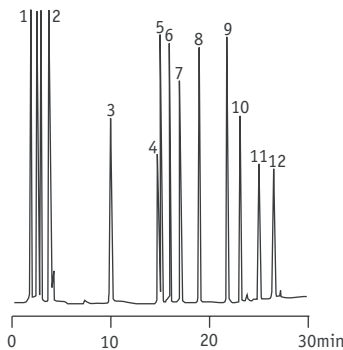
C14-C24 Fatty Acid Methyl Esters



1. Methyl Myristate
2. Methyl Palmitate
3. Methyl Stearate
4. Methyl Oleate
5. Methyl Linoleate
6. Methyl Linolenate
7. Methyl Arachidate
8. Methyl Behenate
9. Methyl Erucate
10. Methyl Lignocerate

Column: VertiBond™ WAX, 25m x 0.25mm, 0.20µm
 Temp: 180°C-240°C at 5°C/min
 Injector: Splitless
 Detector: FID
 Carrier Gas: Hydrogen at 0.8mL/min

Grob Test Mixture



1. Decane
2. Undecane
3. Nonanal
4. 2,3-Butanediol
5. 1-Octanol
6. Methyl Decanoate
7. Dicyclohexylamine
8. Methyl Undecanoate
9. Methyl Dodecanoate
10. 2,6-Dimethylaniline
11. 2,6-Dimethylphenol
12. 2-Ethylhexanoic acid

Column: VertiBond™ WAX, 50m x 0.32mm, 0.3µm
 Temp: 60°C-220°C at 3°C/min
 Injector: Splitless
 Detector: FID
 Carrier Gas: Hydrogen at 40cm/sec