

VertiBond™ MolSieve Capillary Columns

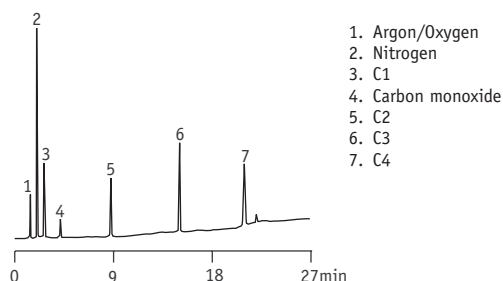
- Molecular sieve 5A
- PLOT columns
- High temperature range
- High efficiency, high inertness columns

VertiBond™ MolSieve column contains Molecular Sieve 5A stationary phase. This PLOT column ideals for separation of permanent gases at ambient temperatures in less than 5 min.

VertiBond™ Molsieve Specifications	
Phase:	Molecular Sieve 5A
Polarity:	
USP Designation:	n/a
Ideal for:	Separates permanent gases, noble gases, SF6, nitrogen, oxygen, carbon monoxide and methane resolved in less than 5 minutes

VertiBond™ Molsieve Specifications	
Restek	Rt-Msieve 5A
Agilent	GS-Molsieve, HP-PLOT/Molsieve
Supelco	Molsieve 5A
Alltech	AT-Molsieve
Varian	CP-Molsieve 5A

Hydrocarbon Gases

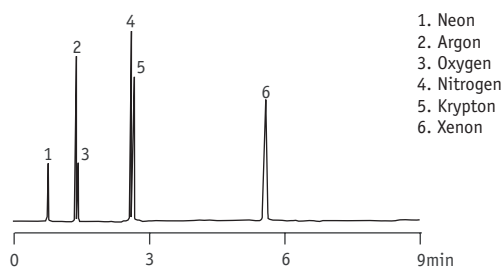


Column: VertiBond™ MolSieve, 30m x 0.53mm, 50.00µm
 Temp: 0°C (hold 2 min.),
 30°C-300°C at 15°C/min,
 300°C (hold 10 min)
 Injector: Splitless
 Detector: FID
 Carrier Gas: Hydrogen 30cm/sec

Ordering Information

Length (m)	I.D. (mm)	Film (µm)	Temp. (°C)	Part No.
15	0.32	12.00	300/300	0422-3271
		25.00	300/300	0422-3301
		50.00	300/300	0422-5401
30	0.32	12.00	300/300	0422-3273
		25.00	300/300	0422-3303
		50.00	300/300	0422-5403

Noble Gases



Column: VertiBond™ MolSieve, 30m x 0.53mm, 50.00µm
 Temp: 35°C (hold 3 min.),
 35°C-120°C at 25°C/min,
 120°C (hold 5 min.)
 Injector: Splitless
 Detector: TCD
 Carrier Gas: Helium at 4mL/min

