

VertiBond™ 624

VertiBond™ 624 Capillary Columns

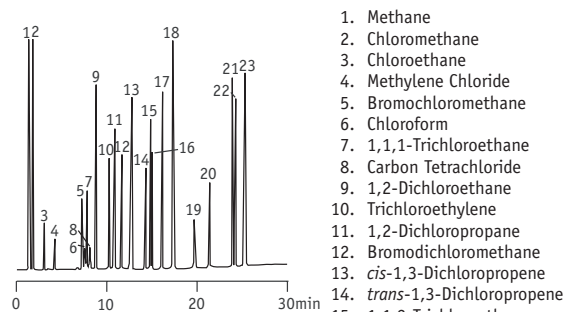
- 6% Cyanopropylphenyl, 94% Dimethylpolysiloxane
- Intermediate polar stationary phase
- High temperature range
- High efficiency, high inertness columns

VertiBond™ 624 column contains 6% Cyanopropylphenyl, 94% Dimethylpolysiloxane stationary phases. This intermediate polar stationary phase is developed specially and tested for volatile organic compounds, making it an excellent choice for several EPA methods like 501.3, 502.2, 524.2, 601, 602, 8010, 8015, 8020, 8221, 8240 and 8260.

VertiBond™ 624 Specifications	
Phase:	6% Cyanopropylphenyl, 94% Dimethylpolysiloxane
Polarity:	Intermediate Polar
USP Designation:	G43
Ideal for:	EPA Methods 524, 601, 602, 624, 8240 and 8260 and Solvent Analysis

VertiBond™ 624 Specifications	
Restek	Rtx-1301, Rtx-624
Agilent	HP-1301, HP-624, DB-1301, DB-624
Supelco	SPB-1301, OVI-G43
Alltech	AT-624
SGE	BPX-624
Varian	CP-1301, CP-624CB
Ohio Valley	OV-624
Phenomenex	ZB-624

Priority Pollutant Analysis



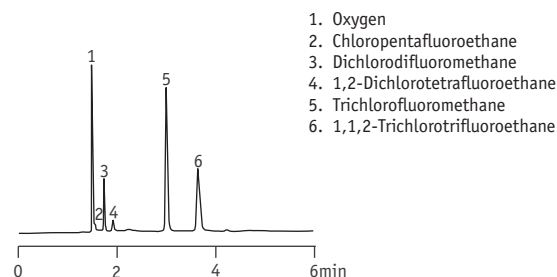
Column: VertiBond™ 624,
30m x 0.53mm,
3.0µm
Temp: 35°C (5min hold),
140°C at 5° C/min
Injector: Splitless
Detector: FID
Carrier Gas: Helium at 5mL/min

1. Methane
2. Chloromethane
3. Chloroethane
4. Methylene Chloride
5. Bromochloromethane
6. Chloroform
7. 1,1,1-Trichloroethane
8. Carbon Tetrachloride
9. 1,2-Dichloroethane
10. Trichloroethylene
11. 1,2-Dichloropropane
12. Bromodichloromethane
13. *cis*-1,3-Dichloropropene
14. *trans*-1,3-Dichloropropene
15. 1,1,2-Trichloroethane
16. Tetrachloroethene
17. Chlorodibromomethane
18. Chlorobenzene
19. Bromoform
20. 1,1,2,2-Tetrachloroethane
21. *m*-Dichlorobenzene
22. *p*-Dichlorobenzene
23. *o*-Dichlorobenzene

Ordering Information

Length (m)	I.D. (mm)	Film (µm)	Temp. (°C)	Part No.
30	0.25	0.10	265/280	0414-2143
	0.32	0.15	265/280	0414-3163
		0.20	265/280	0414-3193
60	0.45	0.25	265/280	0414-4173
	0.53	0.50	265/280	0414-5193
	0.25	0.10	265/280	0414-2145
75	0.32	0.15	265/280	0414-3165
	0.53	0.25	265/280	0414-5195
	0.53	0.50	265/280	0414-5196
105	0.53	0.85	265/280	0414-5197

Chlorofluorocarbons



Column: VertiBond™ 624, 30m x 0.53mm, 3.0µm
Temp: 35°C (hold 4 min),
35°C-45°C at 10°C/min
Injector: Split 1:10, 100µL
Detector: ECD at 350°C
Carrier Gas: Nitrogen at 35mL/min

1. Oxygen
2. Chloropentafluoroethane
3. Dichlorodifluoromethane
4. 1,2-Dichlorotetrafluoroethane
5. Trichlorofluoromethane
6. 1,1,2-Trichlorotrifluoroethane