

## VertiBond™ 20 Capillary Columns

- 20% Phenyl, 80% Dimethylpolysiloxane
- Intermediate polar stationary phase
- High temperature range
- High efficiency, high inertness columns

VertiBond™ 20 contains 20% Phenyl, 80% Dimethyl- polysiloxane stationary phases. This intermediate polarity phase offers unique polarity to give balance between low and mid polarity.

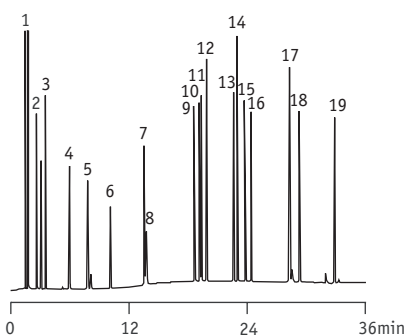
### VertiBond™ 20 Specifications

Phase:	20% Phenyl, 80% Dimethylpolysiloxane
Polarity:	Intermediate polar
USP Designation:	G28, G32
Ideal for:	Volatile Compounds and Solvents

### VertiBond™ 20 Specifications

Restek	Rtx-20
Supelco	SPB-20, VOCOL
Alltech	AT-20
Ohio Valley	OV-20

### Mushroom Aroma (Synthetic)



1. Acetone
2. Ethyl acetate
3. 1-Butanol
4. 3-Methyl-1-butanol
5. 1-Pentanol
6. Hexanal
7. Furfural
8. Amyl acetate
9. 1-Octen-3-ol
10. 3-Octanol
11. 3-Octanone
12. Benzaldehyde
13. Octyl alcohol
14. Benzyl alcohol
15. Phenylacetaldehyde
16. Nonanal
17.  $\alpha$ -Terpineol
18. 2,4-Nonadienal
19. 2,4-Decadienal

Column: VertiBond™ 20, 30m x 0.32mm, 1.0 $\mu$ m  
 Temp: 45 (hold 8 min) to 250°C at 4°C/min  
 Injector: 1 $\mu$ L split injection at 260°C (split ratio: 100:1)  
 Detector: FID  
 Carrier Gas: Hydrogen 40cm/sec

### Ordering Information

Length (m)	I.D. (mm)	Film ( $\mu$ m)	Temp. (°C)	Part No.
15	0.25	0.10	300/320	0404-2001
		0.25	300/320	0404-2051
		0.50	290/310	0404-2091
		1.00	280/300	0404-2111
		0.10	300/320	0404-3001
		0.25	300/320	0404-3051
	0.32	0.50	290/310	0404-3091
		1.00	280/300	0404-3111
		3.00	250/270	0404-3191
		0.10	260/280	0404-5001
		0.25	260/280	0404-5051
		0.50	260/280	0404-5091
25	0.53	1.00	260/280	0404-5111
		1.20	260/280	0404-5121
		1.50	250/270	0404-5151
		3.00	240/260	0404-5191
		0.10	260/280	0404-5122
		0.25	300/320	0404-2003
	0.32	0.25	300/320	0404-2053
		0.50	290/310	0404-2093
		1.00	280/300	0404-2113
		0.10	300/320	0404-3003
		0.25	300/320	0404-3053
		0.50	290/310	0404-3093
30	0.53	1.00	280/300	0404-3113
		3.00	250/270	0404-3193
		0.10	260/280	0404-5003
	0.25	0.25	260/280	0404-5053
		0.50	260/280	0404-5093



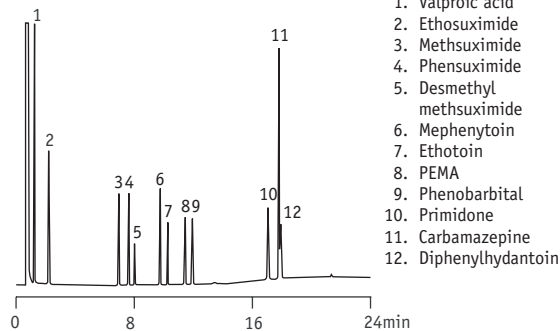
# VertiBond™ 20

## Ordering Information

Length (m)	I.D. (mm)	Film (µm)	Temp. (°C)	Part No.
15	0.53	1.00	260/280	0404-5113
		1.20	260/280	0404-5123
		1.50	250/270	0404-5153
		3.00	240/260	0404-5193
60	0.25	0.10	300/320	0404-2005
		0.25	300/320	0404-2055
		0.50	290/310	0404-2095
		1.00	280/300	0404-2115
	0.32	0.10	300/320	0404-3005
		0.25	300/320	0404-3055
		0.50	290/310	0404-3095
		1.00	280/300	0404-3115
	0.53	0.10	260/280	0404-5005
		0.25	260/280	0404-5055
		0.50	260/280	0404-5095
		1.00	260/280	0404-5115
105	0.25	0.25	250/270	0404-5155
		3.00	240/260	0404-5195
		3.00	250/270	0404-5155
		3.00	240/260	0404-5195



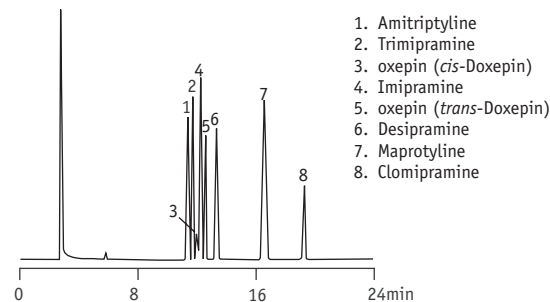
## Underivatized Antiepileptics



1. Valproic acid
2. Ethosuximide
3. Methsuximide
4. Phensuximide
5. Desmethyl methsuximide
6. Mephentoin
7. Ethotoin
8. PEMA
9. Phenobarbital
10. Primidone
11. Carbamazepine
12. Diphenylhydantoin

Column: VertiBond™ 20, 15m x 0.32mm, 0.50µm  
 Temp: 150 to 280°C at 7°C/min (hold 5 min)  
 Injector: 1µL split injection of antiepileptic drugs at 250°C/270°C (split ratio: 30:1)  
 Detector: FID  
 Carrier Gas: Helium 30cm/sec set at 150°C

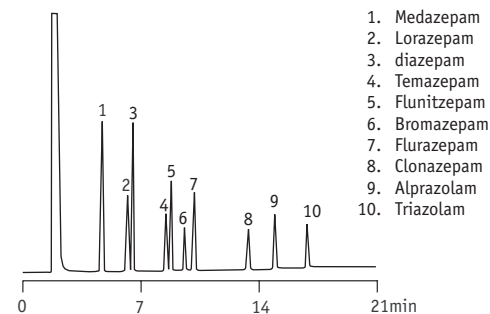
## Antidepressants



1. Amitriptyline
2. Trimipramine
3. oxepin (*cis*-Doxepin)
4. Imipramine
5. oxepin (*trans*-Doxepin)
6. Desipramine
7. Maprotyline
8. Clomipramine

Column: VertiBond™ 20, 30m x 0.32mm, 0.25µm  
 Temp: 235°C  
 Detector: FID  
 Carrier Gas: Helium at 22cm/sec

## Benzodiazepines



1. Medazepam
2. Lorazepam
3. diazepam
4. Temazepam
5. Flunitzepam
6. Bromazepam
7. Flurazepam
8. Clonazepam
9. Alprazolam
10. Triazolam

Column: VertiBond™ 20, 30m x 0.32mm, 0.25µm  
 Temp: 260°C to 300°C at 3°C/min  
 Detector: FID  
 Carrier Gas: Helium at 35cm/sec